



Topps® MultiUse Cleaner™

Maximum Cleaning Strength

This economical alkaline based cleaner is as perfect for heavy duty jobs as it is for use in regular cleaning. A simple change of concentration turns the formula into a cleaning powerhouse suitable for most any project.

Proven effective in so many everyday and industrial applications, this cleaner cuts through grime across a variety of surfaces. MultiUse Cleaner™ is gentle to both the environment and workers, as it dissolves grime without use of dangerous chemicals.

The complex make-up combines 10 ingredients - twice that of ordinary cleaners. Three uniquely different surfactants and an active wetting agent carry the cleaner deep in between dirt particles, where it rapidly begins to dissolve the grease, oil, and other airborne pollutants which bind grime to surfaces.

Typical Specifications MultiUse Cleaner™

Weight per gallon	8.4 - 8.6 lb.
Viscosity	water thin
VOC	10 g/l
Color	pink
pH	9.5 - 11
Solids by weight	1.4%

The dirt then releases as particles suspended in water, where it simultaneously is removed while washing, without requiring a rinse in most applications.

Start with 4-6 ozs to a gallon of clean water when using a power-wash. Use more where needed. Apply full strength direct to heavier soiled areas such as warehouse floors, roofs or pavement, and scrub with a stiff brush prior to flushing it away.

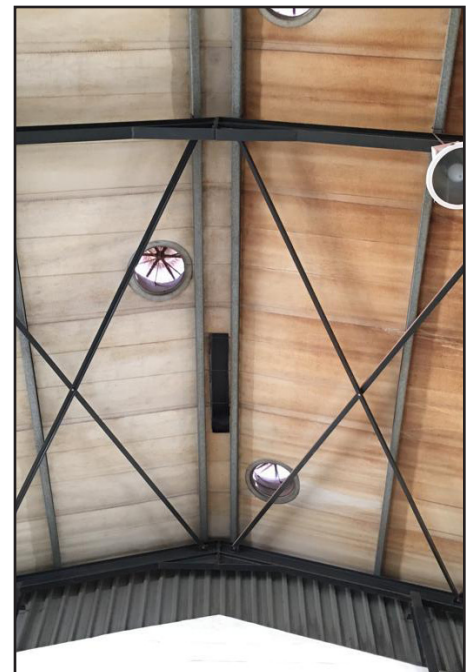
Intended for Commercial & Industrial Use Only



Window panes cleaned with MultiUse Cleaner (center) are visibly brighter!



BUR roof being cleaned with MultiUse Cleaner



Dirty underside of metal roof wouldn't come clean before using MultiUse Cleaner (right).

OMPBMUC131429